



WORK & SKILLS OPPORTUNITIES IN CAMBRIDGESHIRE AND PETERBOROUGH

WORK & SKILLS TODAY

Cambridgeshire & Peterborough has a huge array of jobs and opportunities on offer. As well as a host of different roles in key sectors including Health, Education and Retail, we also have major opportunities in sectors vital to growing our local economy. These are specialisms within broader sectors, and are: Life Sciences, Digital, Advanced Manufacturing and Agri-Tech.

430,000

Number of jobs

44%

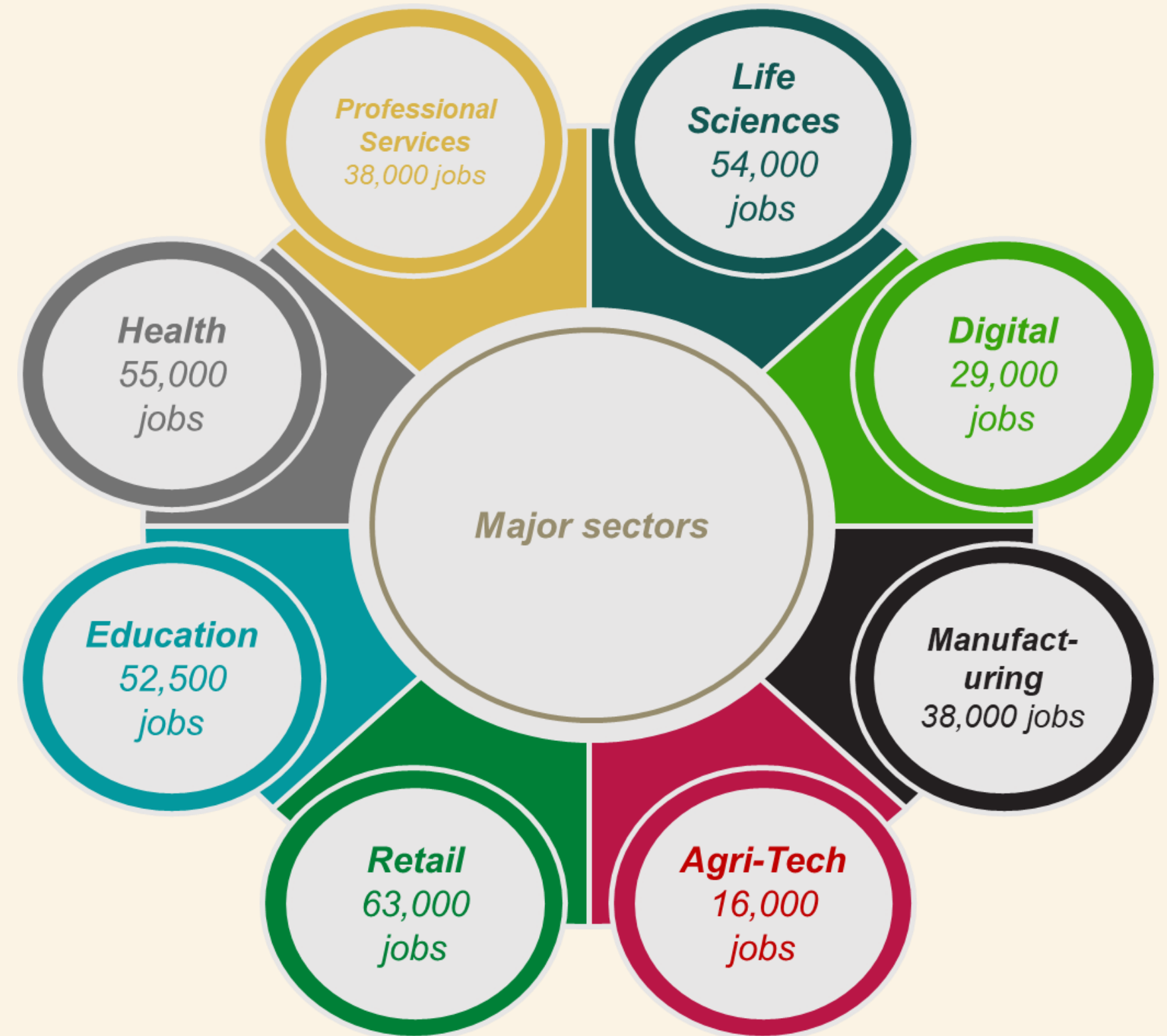
Of people have a university level qualification

£32,000

Median salary

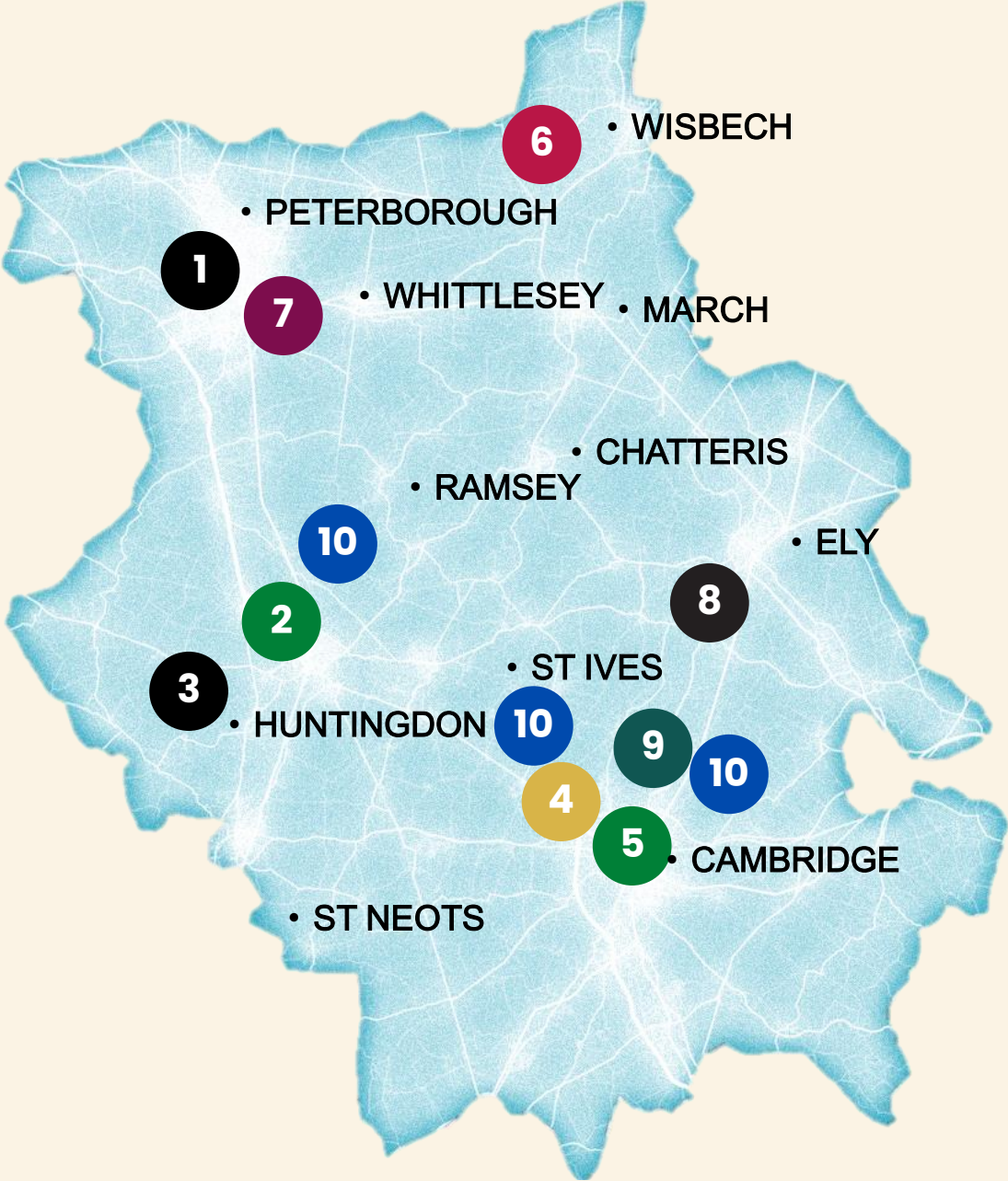
36,000

Businesses



HUBS OF EMPLOYMENT IN CAMBRIDGESHIRE AND PETERBOROUGH

- 1** **Peterborough Advanced Manufacturing Cluster**
Close geographical concentration of robotics, metals and machinery businesses
- 2** **Huntingdon Retail Park**
Cluster of retail and hospitality businesses
- 3** **Huntingdonshire Manufacturing Cluster**
A close geographical concentration of manufacturing businesses in Huntingdonshire
- 4** **Cambourne Business Park**
Cluster of Tech and Professional Services offices
- 5** **Cambridge City Centre**
Educational, Retail and Hospitality hub



- 6** **Fenland Agriculture**
Group of Farming, Agri-tech and Agricultural Manufacturing businesses
- 7** **Peterborough Logistics Cluster**
Area of logistics businesses transporting goods along motorway routes
- 8** **Lancaster Way Business Park**
Large industrial and commercial cluster of tech manufacturing companies
- 9** **Cambridge Research Park**
Cluster of Tech and Life Science research businesses and distributors
- 10** **Enterprise Zones**
Including Northstowe Enterprise Zone, Alconbury Weald and Cambridge Compass Enterprise Zone

WHAT LOCAL CAREER OPPORTUNITIES ARE AVAILABLE TO YOU?

LIFE SCIENCES



Life Sciences is the application of biology and technology to health improvement, and is one of the largest sectors in Cambridgeshire, employing 54,000 people

AGRI-TECH



Agri-Tech is the use of technology to make farming more efficient. It employs 16,000 people in Cambridgeshire & Peterborough.

HEALTH



55,000 people are employed across health and social care in Cambridgeshire & Peterborough, including doctors, nurses, care workers and care assistants.

ADVANCED MANUFACTURING



Advanced Manufacturing is a modern form of Manufacturing using advanced technology, employing 22,000 people.

DIGITAL



Digital involves the trade of goods and services using computer networks and technological infrastructure, employing 27,000 people.

RETAIL



Retail employs 63,000 people in Cambridgeshire & Peterborough, with a wide range of possible career paths including cashiers and store managers.

PROFESSIONAL SERVICES



Professional Services involves the provision of specialist services to businesses, including IT, finance and business advice, and employs 58,000 people.

EDUCATION



52,500 people are employed within education in Cambridgeshire & Peterborough, including teachers and teaching assistants.

TRANSPORT



Transport employs 24,500 people in Cambridgeshire & Peterborough, with a wide range of possible career paths, including drivers, pilots and cabin crew.

CAREERS IN LIFE SCIENCES



The application of biology and technology to health improvement

The Life Sciences industry in Cambridge is unique in its size and influence, and of huge importance to the local economy, anchored by the Cambridge Biomedical Campus.

Average Salary:

£40,000

Per Year

Number of Jobs:

24,000

Early Career Opportunities

- Biomedical Scientist
- Microbiologist
- Industrial Pharmacist
- Research Assistant
- Laboratory Assistant

Essential Qualifications

- Degree in a related science subject for some roles, however increasingly Apprenticeships are an important route into the industry.
- Apprenticeships and practical qualifications such as T Levels are particularly important for technician roles.

Skills

Complex analytical skills
Communication
Problem Solving
IT skills



A Levels or T Levels
In subjects including
Maths and the sciences



Degree or Apprenticeship
In Biology, Chemistry,
Biosciences or related
area



Work experience
In a laboratory or
technician role



WORKING AT ASTRAZENECA

- AstraZeneca is a global pharmaceuticals company, employing over 7,000 people in the UK with a major presence in **Cambridge**.
- Jobs at AstraZeneca can include working in Life Sciences and research into new medicines, but also in business functions such as IT and Project Management.
- The required skills and qualifications vary depending on the job. Some jobs within AstraZeneca will require degrees, but they also recruit at school leaver level and run apprenticeships.



CAREERS IN DIGITAL



The use of technology to trade goods and services, and innovate

Digital is a major opportunity sector in the region and is key to the growth of the local economy with many digital businesses growing and offering exciting opportunities.

Average Salary:

£41,000

Per Year

Number of Jobs:

29,000

Early Career Opportunities

- Data Scientist
- Digital Marketing Assistant
- Cyber Intelligence Officer
- User Experience (UX) Designer
- Virtual Assistant
- Customer Service Assistant

Essential Qualifications

- Degree in Maths, Business or Computer Science may be an advantage for some roles.
- However Digital is a sector where Apprenticeships are a major opportunity, including IT, marketing and business analysis.
- Often opportunity for continuous education during employment.

Skills

IT & technical skills
Critical Thinking
Creativity
Attention to Detail



A Levels

In subjects including Maths, IT or Computer Science, or T Levels in Digital



Degree

In IT or Computer Science or Apprenticeship in Marketing, Data Science or Business Analysis



Work experience

In a Digital Marketing or Software company



EMPLOYER PROFILE

WORKING AT AMAZON



- Amazon is one of the world's largest online retailers and service providers, employing almost 1.5 million people globally.
- Amazon has a large Development Centre located in **Cambridge**, with an array of opportunities for careers in Digital, working on cutting edge services including Amazon Alexa, Amazon Devices and Amazon Web Services. There is also a large distribution centre in **Peterborough**, with opportunities in logistics.
- Most of these digital roles will require at least A Levels and possibly a degree or equivalent qualification in Software Development or Computing.

The Amazon logo, consisting of the word "amazon" in a bold, lowercase, black sans-serif font, with a curved orange arrow underneath it pointing from the letter 'a' to the letter 'z'.

CAREERS IN ADVANCED MANUFACTURING

Average Salary:

£38,500

Per Year

Number of Jobs:

22,000

The production of goods using cutting edge technologies and techniques

Advanced Manufacturing is key to the growth of the local economy, with major employment sites across Cambridgeshire & Peterborough.

Early Career Opportunities

- Computer-aided Design Technician
- Robotics Engineer
- Welder
- Production Engineer
- Factory Operative

Essential Qualifications

- For Engineering roles, a Science, Technology, Engineering or Maths (STEM) qualification will be required, either a degree, or T Levels and an Apprenticeship.
- For practical roles in particular there is an emphasis on vocational education.

Skills

Creative Thinking
IT skills
Communication
Working as part of a team



A Levels

In subjects such as Maths and science
Or T Levels in Engineering & Manufacturing



Degree

In Science, Maths or Engineering
Or Apprenticeship in Engineering or Manufacturing



Work experience

In a manufacturing, pharmaceutical or engineering company



WORKING AT MARSHALL GROUP



- Marshall Group is an advanced manufacturing company based in **South Cambridgeshire**, specialising in aerospace solutions.
- It is also a major local employer, with over 2,000 staff members working across an array of services including aircraft maintenance, modification and design.
- The required skills and qualifications vary depending on the job, with technical roles requiring a degree level qualification, but many other roles requiring either A Levels or relevant work experience, possibly gained through an apprenticeship.

The Marshall logo, featuring a stylized 'M' icon followed by the word 'Marshall' in a bold, sans-serif font. The logo is white and is centered within a white rectangular box.

CAREERS IN AGRI-TECH



Average Salary:

£28,500

Per Year

Number of Jobs:

16,000

The use of technology to make farming more efficient

Agri-Tech is another major growth sector across the Cambridgeshire & Peterborough area, with exciting opportunities across the region.

Early Career Opportunities

- Agriculturist
- Agricultural Field Technician
- Software Engineer
- Business Advisor
- Farming Assistant

Essential Qualifications

- For Scientific and Engineering roles within Agri-Tech a STEM qualification may be required, which could be a degree, T Levels or an apprenticeship
- Vocational education or apprenticeships are particularly important for more practical roles.

Skills

Data skills
Initiative
Time management
Adaptability



A Levels

In subjects including IT and the sciences,
Or T Levels in agriculture and land management



Degree

In Biology, Engineering or Biosciences
Or Technician Apprenticeship



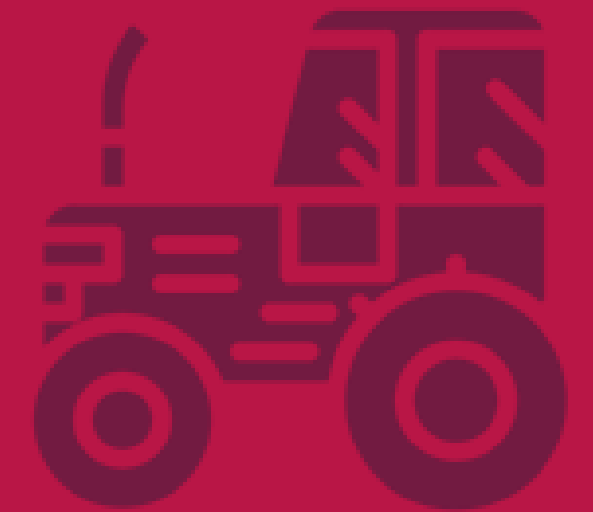
Work experience
In a laboratory or technician role



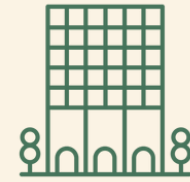
EMPLOYER PROFILE

WORKING AT MCCAINS FOOD

- McCains Food is a major global food supplier. It has 52 production facilities across six continents, employing over 21,000 employees across the world.
- McCains has a significant presence in **Fenland**, with opportunities in agriculture and agri-tech as well as manufacturing and retail distribution.
- The required skills and qualifications vary depending on the job, with some agriculture roles being purely entry level and only requiring GCSEs, whilst other more technical roles will require qualifications including T Levels or A Levels.



CAREERS IN RETAIL



The sale of goods and services to the public for consumption

Retail is a huge and important sector across the region, and is also changing rapidly, as more customers switch to online and digital shopping, creating exciting new opportunities.

Average Salary:

£20,500

Per Year

Number of Jobs:

63,000

Early Career Opportunities

- Warehouse Operative
- Shelf Stacker
- Cashier
- Store worker
- Management graduate scheme
- Assistant Store Manager

Essential Qualifications

- For entry level roles, GCSEs may be required, although some employers may be flexible, offering on the job training.
- For apprenticeships, GCSEs will be required for entry, with a degree required for management graduate schemes.

Skills

Working under pressure
Teamwork
Initiative
Customer service



GCSEs or initial work experience, entering on the job training



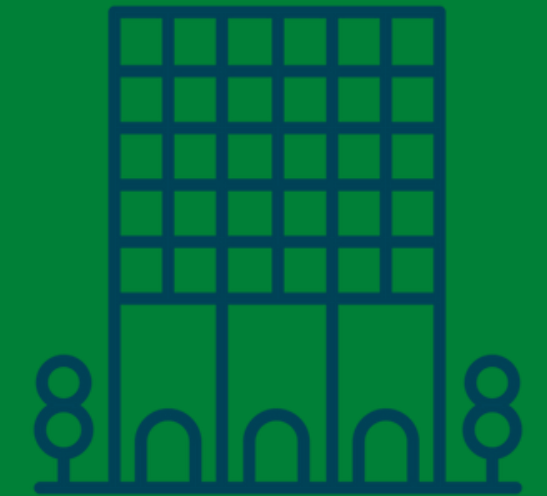
Qualification (such as T Levels), additional on the job training or retail employer apprenticeship



Career progression following apprenticeship, work experience or employer training



WORKING AT HOTEL CHOCOLAT



- Hotel Chocolat is a British chocolate manufacturer, selling chocolate and cocoa products, online, in store and in cafés, with over 1,000 employees nationally.
- Hotel Chocolat has a factory outlet in **Huntingdonshire**, so there are customer facing retail opportunities in the shop and café, but also opportunities in the factory, including in packing, manufacturing and digital.
- The required skills and qualifications vary depending on the job, with retail roles requiring GCSEs, with some more technical roles requiring specific qualifications including A Levels or T Levels, or specific on the job training.



CAREERS IN EDUCATION



Teaching and the transfer of knowledge to children and young adults

Education is a crucial sector locally and nationally, with opportunities in Cambridgeshire & Peterborough's schools, colleges and world leading universities.

Average Salary: **Number of Jobs:**

£26,300

Per Year

52,500

Early Career Opportunities

- Trainee Teacher
- Teaching Assistant
- Classroom Support Worker
- Playground Supervisor
- School Receptionist

Essential Qualifications

- To become a Teacher a degree level qualification is required, as well as a teacher training PGCE, whereas Support Workers may require Education and Childcare qualifications such as T Levels.
- To become a Teaching Assistant, GCSEs English and Maths are needed, and a qualification in childcare or nursery work can be an advantage.

Skills

Patience
Empathy
Creativity
Communication skills
Enthusiasm



A Levels

In the subjects you want to teach

Or T Levels in Education and Childcare



Degree

In the subject you want to teach
Or Education or childcare qualification



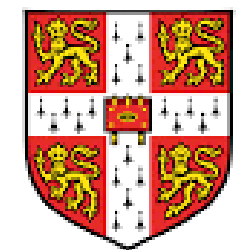
PGCE, or work experience as a Teaching Assistant



WORKING AT UNIVERSITY OF CAMBRIDGE



- The University of **Cambridge** is one of the most prestigious universities in the UK, with over 20,000 students.
- However it is also a major local employer, with over 12,000 staff members working across an array of services. The university has career opportunities available in academia, but also within Digital and IT, student services and support, project management and administrative functions.
- The required skills and qualifications vary depending on the job, with academic roles requiring a degree, but administrative and support roles requiring GCSEs and either A Levels or an equivalent qualification.



UNIVERSITY OF
CAMBRIDGE

CAREERS IN HEALTH



The provision of health care and medical care to individuals and the community

Health care is vital for the health and wellbeing of people within Cambridgeshire & Peterborough, with opportunities in hospitals and care settings across the region.

Average Salary:

£22,800

Per Year

Number of Jobs:

55,000

Early Career Opportunities

- Nurse
- Junior Doctor
- Trainee Vet
- Care Worker
- Care Giver
- Medical Assistant
- Ambulance Care Assistant

Essential Qualifications

- To become a doctor, nurse or vet a medicine or nursing degree, including on the job training, is required.
- However vocational options such as T Levels are also available for careers including care workers, emergency care assistants or ambulance care assistants.

Skills

Scientific knowledge
Empathy
Working under pressure
Methodological thinking



A Levels

In subjects including
Maths and the sciences
Or T Level in Health or
Healthcare Science



Degree

In Medicine, Veterinary
Medicine or Nursing
Or HTQ in Health and Science
and on the job training



Professional training and
work experience in
chosen field



EMPLOYER PROFILE

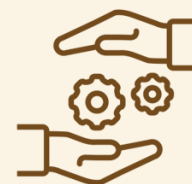
WORKING AT NHS



- The National Health Service (NHS) is the national provider of health care across the UK, employing over 700,000 people across the country.
- Jobs within the NHS include doctors, nurses, midwives and other healthcare professionals, including community care, but there are also opportunities available within digital, project management, administration and support services. Major hospitals within the area include Addenbrookes, Papworth and Rosie on the **Cambridge Biomedical Campus**, as well as **Peterborough City Hospital**, specialising in Radiotherapy and Oncology, and **Hinchingbrooke Hospital**, with specialties including vascular services and children's health services.
- The required skills and qualifications will vary, with doctors and nurses requiring a degree in Medicine or Nursing, and care workers requiring specific qualifications. A degree may be helpful for digital or support roles, but there are roles for which GCSEs and A Levels are sufficient, and the NHS offers apprenticeships and training.



CAREERS IN PROFESSIONAL SERVICES



The provision of specialist services to businesses, including IT, finance and business advice

Professional services spans many sectors and industries, and whilst there are clusters in Cambridge, there are opportunities available across the region.

Average Salary:

£32,700

Per Year

Number of Jobs:

58,000

Early Career Opportunities

- Trainee Accountant
- Management Consultant
- Trainee Lawyer
- Architect
- Receptionist
- Admin assistant

Essential Qualifications

- For some roles, particularly within law, a relevant degree will be required.
- For industries such as Accounting or Business Admin, Apprenticeships are offered, which may require A Levels, although T Levels in areas such as Accounting are becoming increasingly popular.

Skills

Analytical skills
Teamwork
Problem solving
Methodological thinking



A Levels or T Levels
In subjects relevant to
chosen pathway, such as
Maths, Law or Accounting



Degree
In relevant subject, or
Apprenticeship in chosen
field



Work experience
In a business or
organisation of interest



WORKING AT CAMBRIDGESHIRE COUNTY COUNCIL



- Cambridgeshire County Council is responsible for public services across **Cambridgeshire**, and its vision is to make Cambridgeshire a great place to call home.
- There are a wide range of career opportunities at the County Council, working within areas including Education, Transport and Social Care, but also within functions including IT and Human Resources.
- The required skills and qualifications vary depending on the job. Some jobs, such as within social care, will require specific qualifications, but the County Council also recruits at school leaver level and provides on the job training.



CAREERS IN TRANSPORT



Taking and carrying people, goods and services from one location to another

Transport is another hugely important part of our daily lives, and the sector is a key part of the local economy, with opportunities across the region.

Average Salary:

£30,000

Per Year

Number of Jobs:

24,500

Early Career Opportunities

- Transport Planner
- Pilot Cadet Programme
- Cabin Crew
- Train Station worker
- Bus driver
- Train driver

Essential Qualifications

- For most roles GCSEs will be required, with some more technical roles requiring A Levels, T Levels or specific qualifications.
- To become a pilot, you need to undertake a specific pilot training course.
- A driving licence is required for any driving-based roles.

Skills

Quick thinking
Communication skills
Time management
Adaptability



GCSEs including Maths & English, plus A Levels or T Levels in relevant subjects



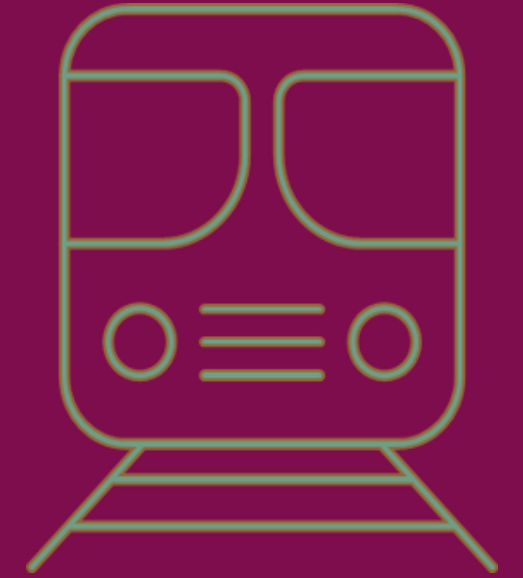
Degree, Apprenticeship or Training Programme in Transport area of interest, including Planning or Logistics



Work experience and on the job training



WORKING AT WELCH'S TRANSPORT LTD



- Welch's Transport Ltd is a leading haulage company, with headquarters in **Duxford**. It specialises in transportation and storage solutions including general haulage, pallet delivery and the storage and distribution of dangerous goods and abnormal loads.
- There are a range of career opportunities available, including drivers, warehouse operatives, administration and HGV Drivers Apprenticeships.
- The required skills and qualifications vary depending on the job. Driving jobs will require the appropriate vehicle licences, and apprenticeships will require GCSEs, with specific qualifications required for more technical roles.



JOBS IN CAMBRIDGE

69,600

Jobs

64%

Of people have a university level qualification

£30,500

Median Salary

5,000

Businesses

TOP SECTORS IN CAMBRIDGE



MAJOR EMPLOYERS

ASTRAZENECA

is a major global pharmaceutical company with a huge presence in Cambridge, with opportunities in life sciences, digital and research.

UNIVERSITY OF CAMBRIDGE

is one of the largest employers in Cambridge, with opportunities in professional services, digital, academia and student services including mental health support.

EDUCATION

Including: teaching, teaching assistants

HEALTH

Including: nursing, social care, medical practitioners

PROFESSIONAL SERVICES

Including: engineering, law, science, technology

RETAIL

Including: sales, merchandising, logistics, customer service

FOOD

Including: food manufacturing, distribution, farming

JOBS IN PETERBOROUGH

98,000

Jobs

36%

Of people have a university level qualification

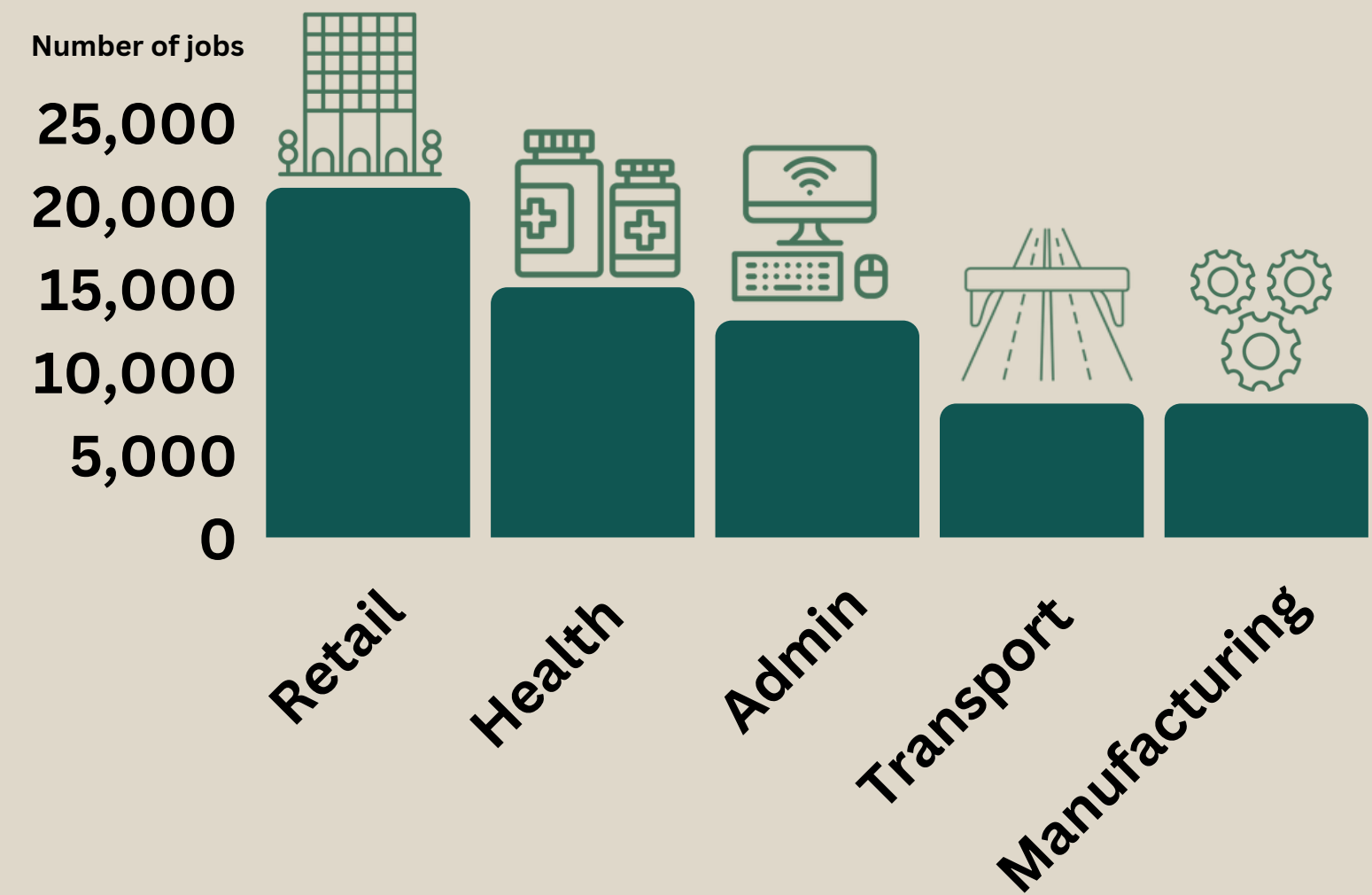
£25,600

Median Salary

8,000

Businesses

TOP SECTORS IN PETERBOROUGH



MAJOR EMPLOYERS

AMAZON

Is one of the world's largest online retailers and service providers, employing almost 1.5 million people globally, with a major distribution centre in Peterborough.

LIDL

Is a major European retailer, with a £70million warehouse in Peterborough, employing over 400 people.

RETAIL

Including: sales, merchandising, logistics, customer service

HEALTH

Including: nursing, social care, medical practitioners

ADMIN

Including: secretary, receptionist, administration support

TRANSPORT

Including: haulage, distribution, delivery driver

MANUFACTURING

Including: engineering, distribution, farming

JOBS IN SOUTH CAMBRIDGESHIRE

80,000

Jobs

63%

Of people have a university level qualification

£33,400

Median Salary

8,400

Businesses

MAJOR EMPLOYERS

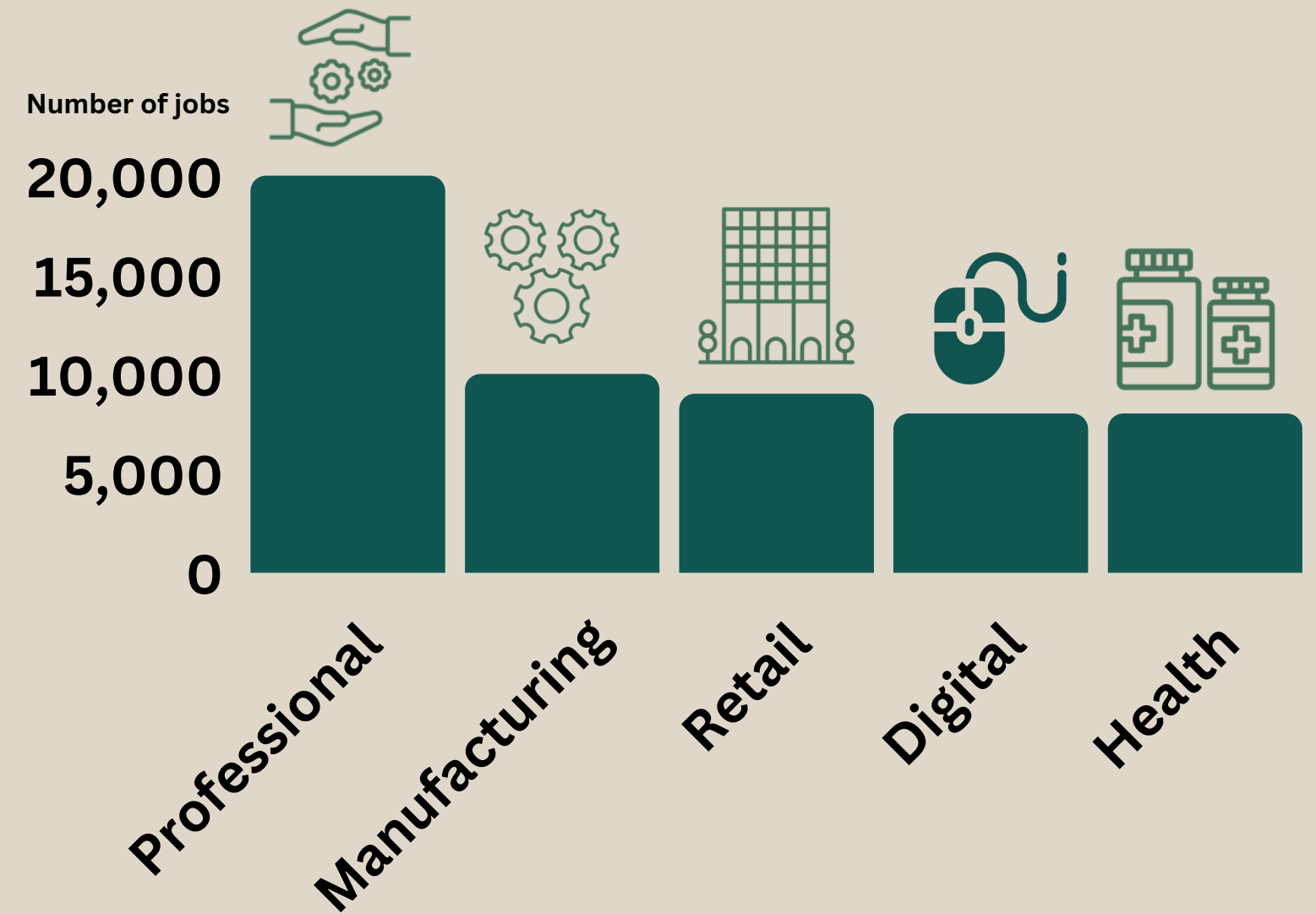
AMINO COMMUNICATIONS

is a global technology solutions provider, with its UK headquarters in South Cambridge. There are career opportunities within Digital and Manufacturing.

MARSHALL GROUP

operates within advanced manufacturing, specialising in aerospace solutions, and is based in South Cambridgeshire.

TOP SECTORS IN SOUTH CAMBRIDGESHIRE



PROFESSIONAL SERVICES

Including: engineering, law, science, technology

MANUFACTURING

Including: engineering, distribution, farming

RETAIL

Including: sales, merchandising, logistics, customer service

DIGITAL

Including: data science, IT, digital marketing

HEALTH

Including: nursing, social care, medical practitioners

JOBS IN EAST CAMBRIDGESHIRE

46,000

Jobs

35%

Of people have a university level qualification

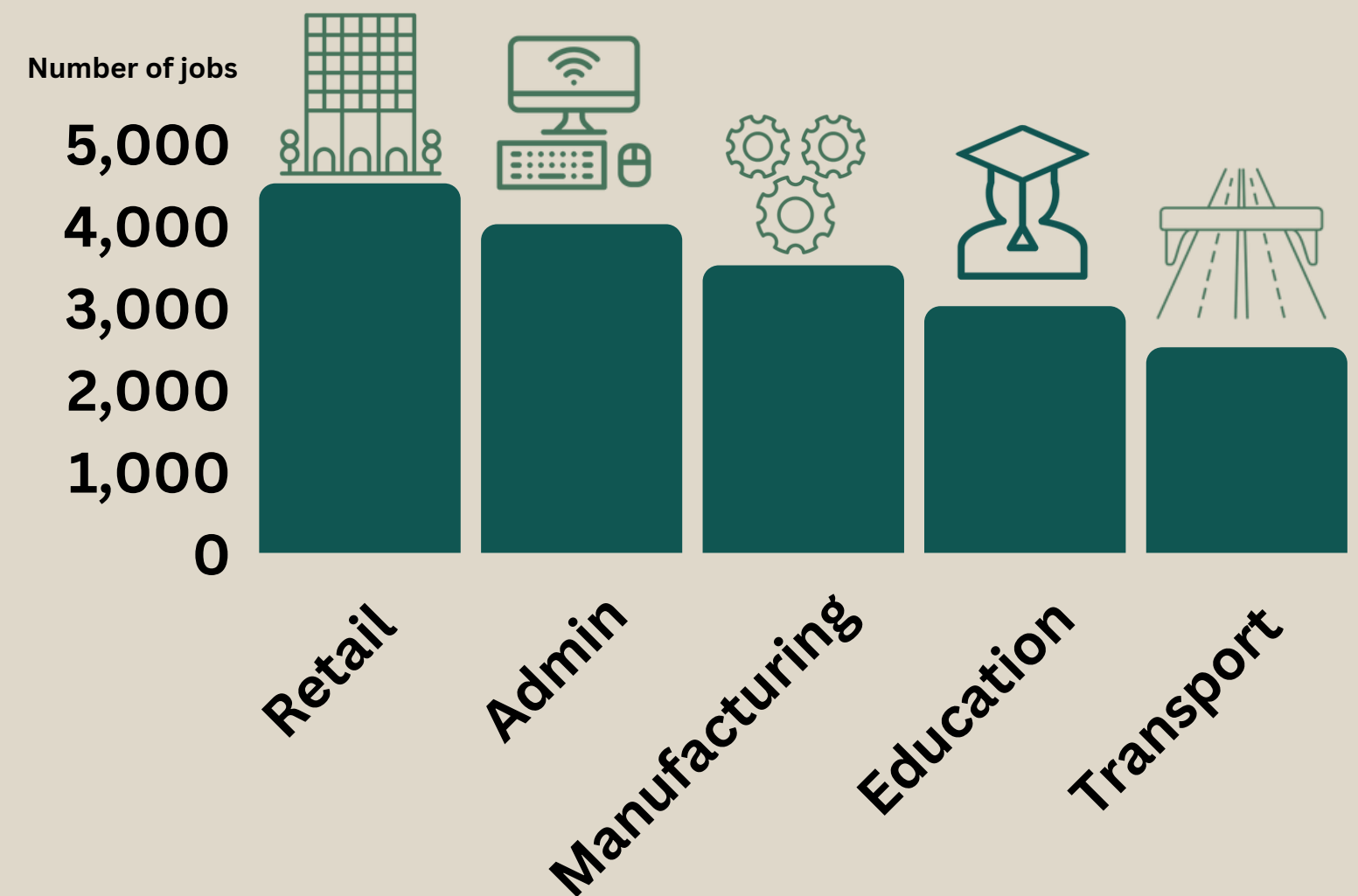
£25,000

Median Salary

4,000

Businesses

TOP SECTORS IN EAST CAMBRIDGESHIRE



MAJOR EMPLOYERS

**ELYSIUM
HEALTHCARE**

is a health and social care provider, specialising in neurological and children's services

THORLABS

is a global optical technologies company with a base in Ely, specialising in the design and manufacture of innovative photonics products for manufacturing and research.

RETAIL

Including: sales, merchandising, logistics, customer service

ADMIN

Including: secretary, receptionist, administration support

MANUFACTURING

Including: engineering, distribution, farming

EDUCATION

Including: teaching, teaching assistants

TRANSPORT

Including: haulage, distribution, delivery driver

JOBS IN FENLAND

48,500

Jobs

17%

Of people have a university level qualification

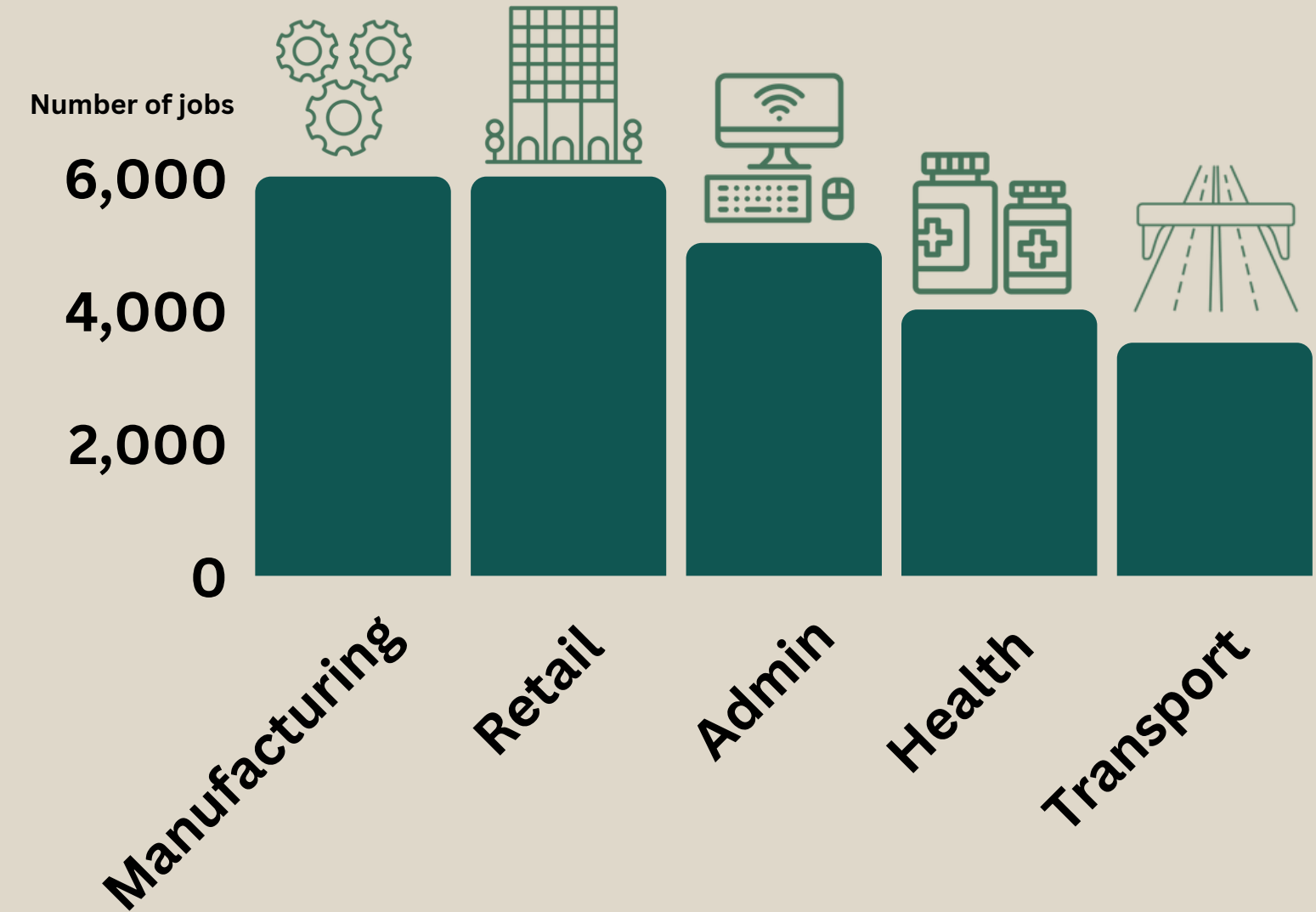
£20,600

Median Salary

3,700

Businesses

TOP SECTORS IN FENLAND



MAJOR EMPLOYERS

PRINCES GROUP

Is one of Europe's largest food and drink groups. They source and manufacture products, and supply food and drink to suppliers across Europe.

MCCAINS FOOD

Is a major global food supplier with a significant presence in Fenland, with opportunities in agri-tech, manufacturing and retail distribution.

MANUFACTURING

Including: engineering, distribution, farming

RETAIL

Including: sales, merchandising, logistics, customer service

ADMIN

Including: secretary, receptionist, administration support

HEALTH

Including: nursing, social care, medical practitioners

TRANSPORT

Including: haulage, distribution, delivery driver

JOBS IN HUNTINGDONSHIRE

86,300

Jobs

38%

Of people have a university level qualification

£27,800

Median Salary

7,900

Businesses

MAJOR EMPLOYERS

HINCHINGBROOKE HOSPITAL

A 304 bed hospital providing surgeries, ear nose and throat, vascular services and children's health services

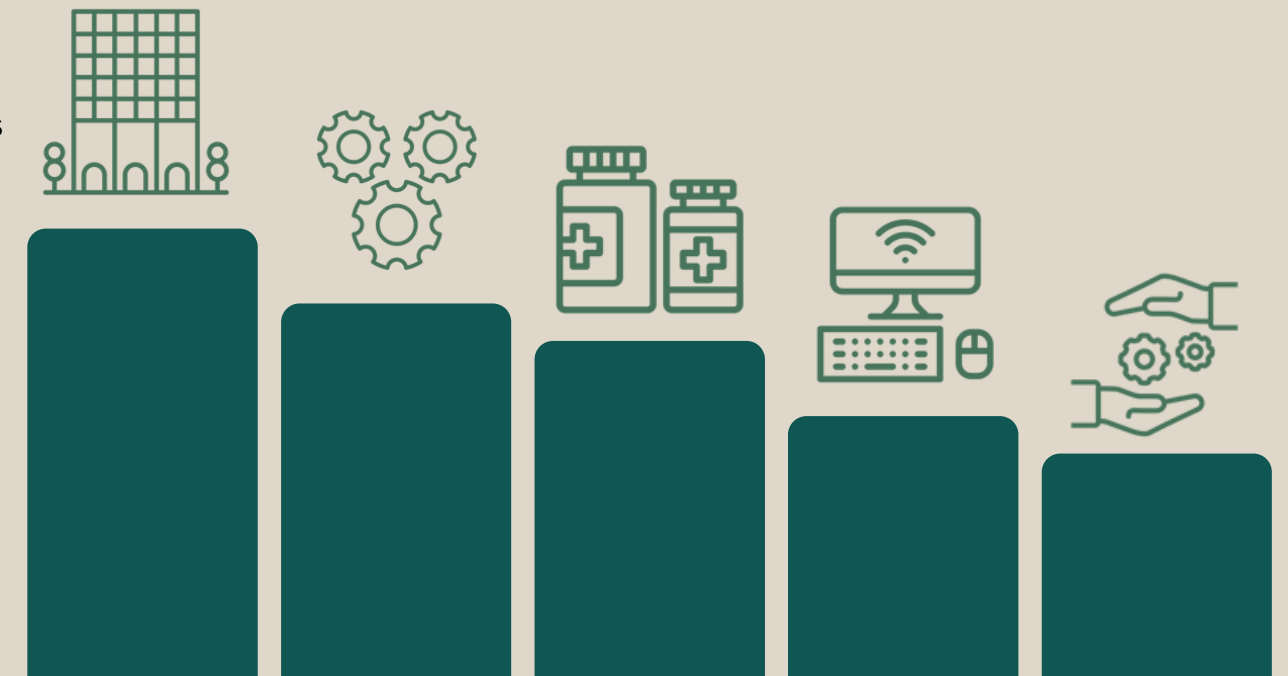
HOTEL CHOCOLAT

is a British chocolate manufacturer, selling chocolate and cocoa products, online, in store and in cafés, with a factory outlet in Huntingdon.

TOP SECTORS IN HUNTINGDONSHIRE

Number of jobs

12,500
10,000
7,500
5,000
2,500
0



Retail

Manufacturing

Health

Admin

Professional

RETAIL

Including: sales, merchandising, logistics, customer service

MANUFACTURING

Including: engineering, distribution, farming

HEALTH

Including: nursing, social care, medical practitioners

ADMIN

Including: secretary, receptionist, administration support

PROFESSIONAL SERVICES

Including: engineering, law, science, technology

FURTHER STUDY

Pathways from school into employment

UNIVERSITY

University degrees usually last a minimum of 3 years and involve studying through a mix of lectures and tutorials, and completing coursework and exams, and can provide pathways into many different careers.

APPRENTICESHIPS

Apprenticeships provide a route into industry, available across a wide range of industries. Apprenticeships allow you to 'work whilst you learn' and you will usually spend a set amount of time studying for a professional qualification, or possibly a degree, whilst you work for a particular company.

ON THE JOB TRAINING

On the job training is training or education that takes place whilst in a job. This might be informal learning from a manager or mentor, but may also be formal learning for a professional qualification that is needed to progress in the job.

TECHNICAL EDUCATION

Technical education is a career focused option, with T Levels a technical alternative to A Levels, and Higher Technical Qualifications (HTQ) an alternative to degree, developed with businesses, with specific skill requirements in mind.

WORK EXPERIENCE

Work experience is where you gain experience of what it is like to work within a particular job or company. It is usually short and runs for one or two weeks, and is usually unpaid. Work experience is often organised by schools and usually takes place whilst you are still in education.

ROUTES TO FURTHER STUDY

GCSEs remain a compulsory qualification in the UK, and moving into some forms of further study will require five passes at GCSE, including Maths and English. Resitting these qualifications is an option in order to progress to further study or work. Alternatively, Level 2 BTECs, NVQs, and Functional Skills are also a pathway into further education.

FURTHER STUDY

Local education providers in Cambridgeshire & Peterborough

COLLEGES

Local colleges include:

- Inspire Education Group – Peterborough College and Stamford College
- Cambridge Regional College
- College of West Anglia
- Bedford College
- West Suffolk College
- North Hertfordshire College
- North Cambridgeshire Training Centre

In addition, a large proportion of our secondary schools offer Sixth Form colleges, where students can study A Levels, T Levels, BTECs and wider curriculum offers.

HIGHER EDUCATION

Local Higher Education providers include:

- University of Cambridge
- Anglia Ruskin University Cambridge
- ARU Peterborough
- University Centre Peterborough
- Cambridge Regional College
- Inspire Education Group – Peterborough

ADULT LEARNING

Local training providers include:

- The Skills Network
- Purple Beard
- Capita Public Service
- Construction Skills People Ltd
- Duplex Business Services
- Imeta Training Ltd
- Retrofit Academy
- Steadfast Training
- Back to Work
- NACRO
- SERCO
- Ixion
- New Meaning Foundation
- Cambridgeshire Skills

LOCAL CAREERS SERVICES

LOCAL CAREERS SERVICES AVAILABLE INCLUDE

- [Career Focus Cambridge](#)
- [University of Cambridge Careers Service](#)
- [Cambridgeshire Skills](#)
- [Cambridgeshire & Peterborough Careers Hub](#)
- [National Careers Service](#)
- [JobCentrePlus](#)
- [Form The Future](#)
- [Peterborough Online Careers Service](#)