

TOTAL CLOTHING

YOUR SCHOOL UNIFORM SUPPLIER



SCHOOLS

**EARLY
BIRD OFFER**

**FREE POSTAGE
& PACKING**

**When you spend
over £50.00**

*(From 1st until
30th June 2020).*



**CHESTERTON
COMMUNITY COLLEGE**

UNIFORM GUIDE AND PRICE LIST

www.totalclothingshop.co.uk/chesterton

Like us on
facebook 

*To stay up to date
with our latest offers.*

At the time of producing this leaflet we are still operating under government guidelines during the Covid 19 pandemic. Please check our website: www.totalclothing.co.uk for the latest information updates.

**PLEASE ORDER BY
THURSDAY 13TH AUGUST**
To guarantee delivery
before Back to School.



SCHOOLS

INTRODUCTION

Dear Parents & Carers

Watch this [video](#) for all of the Chesterton Community College uniform requirements and helpful sizing hints.

We have designed this booklet to help you to order your school uniform with ease, whilst understanding the requirements from the school. Given the current Covid-19 situation, we have added some additional information to try and make it as easy as possible.

We understand how difficult it can be when you are buying secondary school uniform for the first time (or even second or third time) as children's sizes can be so different. With this in mind, we have designed this booklet to help you every step of the way.

We start with a [Uniform Measuring Guide](#) to ensure that you measure correctly for each garment. On this page you will see how to measure for each part of the school uniform you will need.

We have also included a [Hints & Tips](#) section on buying your school uniform.

You will also see a [Uniform Policy](#) which tells you how the uniform should be worn and what is not acceptable.

On the pages that follow there is a comprehensive [Uniform Size Guide](#) detailing the garments required for your school uniform. Garments will be marked compulsory and optional so you can see what you need to buy now and what you can maybe purchase later.

We always encourage parents to order as soon as possible to ensure you will have the correct uniform for back to school.

Lastly you will see the link to order your school uniform on-line. This can be done via your school website.

We have a returns policy of 28 days from your purchase to return or exchange of your garments. It would be great if you could send returns as soon as possible to help our stock levels.

We are here to help you get the best fit for school uniform for your child. If you have any questions please call our friendly customer care team on **01733 394758** or via email at customerservices@totalclothing.co.uk who will be happy to advise you.

Kind regards

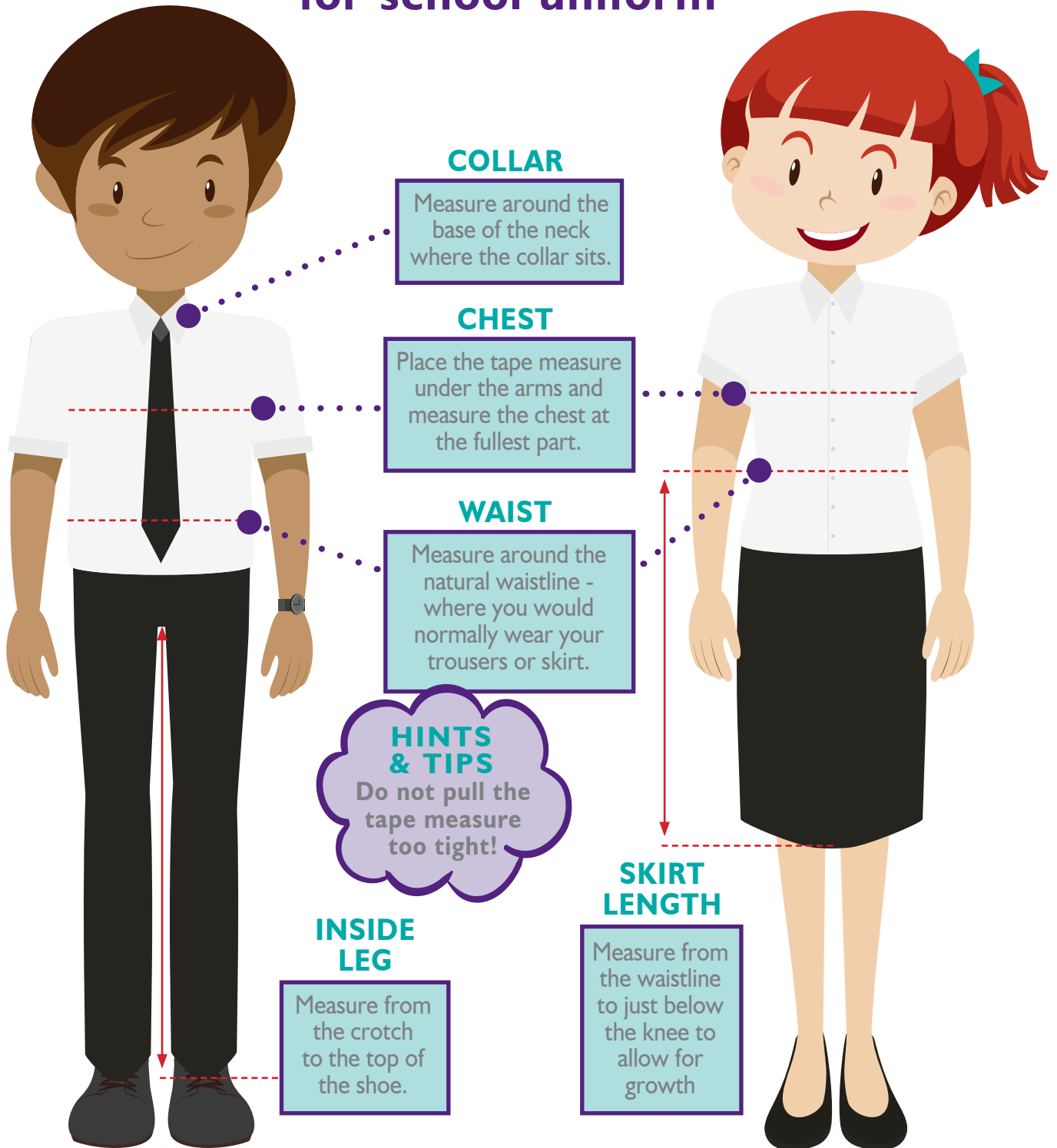
Christine, Laura, James and Ben
The Schools Team, Total Clothing Ltd



SCHOOLS

UNIFORM MEASURING GUIDE

How to measure your child for school uniform





SCHOOLS

CHESTERTON COMMUNITY COLLEGE | UNIFORM

DAY WEAR

GREY POLO SHIRT *

(College Crest with House colour) - To be worn at all times (Fairtrade)

NAVY SWEATSHIRT *

(College Crest) - To be worn over the Polo Shirt (Fairtrade)

GIRLS' TROUSERS

Plain Black

SKIRT

'Henley' Style Plain Black

BOYS' TROUSERS

Plain Black

HATS

Students may wear hats outdoors.

Students must not wear hats inside the school buildings at any time.

ITEMS OF RELIGIOUS SIGNIFICANCE

Discreet items may be worn. Head scarves, in any plain colour, may be worn.



SCHOOLS

Visit www.totalclothingshop.co.uk/chesterton
or visit our showroom.



SCHOOLS

CHESTERTON COMMUNITY COLLEGE | UNIFORM

ESSENTIAL PE KIT

- Navy and sky blue hooped football socks *
- Sky blue t-shirt with college logo * OR sky blue lady fit t-shirt with logo *
- Navy/sky blue reversible rugby shirt (boys only) *
- Navy blue regular fit fleece with logo (girls only) *
- Navy blue regular fit shorts OR navy blue skorts OR navy blue running tights OR navy blue leggings*
- Navy blue or black swimming costume (girls only)
- Navy blue or black trunks/shorts (boys only)
- The regular PE shorts can alternatively be used for swimming
- Trainers
- Shin pads (football and hockey)
- Football boots (football, rugby and hockey)

Optional PE Kit in Year 7, 8 and 9

- Any plain navy blue long sleeve base layer
- Any plain navy blue base layer shorts
- Any plain navy blue tracksuit bottoms

Recommended for some activities in Year 7, 8 and 9

- Gum shield (hockey and rugby)

All PE kit should be plain in colour
Clothing with small logos are permitted

* These items may only be purchased from the college supplier or college shop



SCHOOLS

Visit www.totalclothingshop.co.uk/chesterton
or visit our showroom.



HINTS & TIPS | SPECIFIC TO YOUR SCHOOL

HINTS & TIPS BEFORE YOU START...

...make sure you know the house colour your child is belongs to, as you will need this to purchase the correct polo shirt colour logo.

HINTS & TIPS BOYS TROUSERS

These fit true to size and have an adjustable waist.

HINTS & TIPS SKIRTS

Remember to fit to just below the knee to allow for growth.

HINTS & TIPS GIRLS TROUSERS

These fit just below the waist and are a generous fit.

HINTS & TIPS PE SHORTS

The PE Shorts have a draw string to pull the waist in tighter.

HINTS & TIPS UNISEX FLEECE

Ensure you have room for sports movement when fitting.

HINTS & TIPS SKORTS

These come in waist sizes so use your skirt measurement for this.

HINTS & TIPS PE TOPS

PE Tops should always be bought slightly bigger to allow for growth and ease of taking on and off in a hurry when changing.

HINTS & TIPS DON'T FORGET

Don't forget name labels, water bottles and mouth guards!

CHESTERTON COMMUNITY COLLEGE | DAY WEAR

CHESTERTON HOUSE POLO SHIRT (Compulsory)



CAVENDISH HOUSE (Yellow)



EQUIANO HOUSE (Navy)



FAWCETT HOUSE (Purple)



HILL HOUSE (Green)



ROBINSON HOUSE (Red)

AGE 9/10

Chest 30"

AGE 11/12

Chest 32"

AGE 13

Chest 34"

SIZE S

Chest 36"

SIZE M

Chest 39"

SIZE L

Chest 43"

Left chest embroidery. Unique anti pill fabric. Flat knit collar and ribbed cuffs. Taped neck seam. Mock horn buttons.

From £9.99

QUANTITY/SIZE REQUIRED



CHESTERTON SWEATSHIRT (Compulsory)

AGE 9/10

Chest 30/32"

AGE 11/12

Chest 32/34"

AGE XS

Chest 34/36"

SIZE S

Chest 36/38"

SIZE M

Chest 38/40"

SIZE L

Chest 40/42"

SIZE XL

Chest 42/44"

Left chest embroidery. Spot Shield coating for fabric protection. Flatlock stitching on raglan seam. Raglan sleeve. Cover seamed, crew neck for shape retention. Reinforced seams for added strength. Improved fade resistance

From £12.40

QUANTITY/SIZE REQUIRED



CHESTERTON CHARLSTON PLEATED GIRLS SKIRT

AGE 8/9

W/L 22/18

AGE 9/10

W/L 22/20

AGE 11/12

W/L 24/18

W/L 24/20

W/L 24/22

W/L 26/18

W/L 26/20

W/L 26/22

W/L 28/18

W/L 28/20

W/L 28/22

W/L 30/20

W/L 30/22

W/L 32/20

W/L 34/20

W/L 36/20

Deep yoke. Side zip fastening. Sizes are in inches.

From £14.50

QUANTITY/SIZE REQUIRED



CHESTERTON GIRLS TWIN POCKET TROUSERS

Age 9

W/L 32/30

AGE 10

W/L 34/30

W/L 22/28

W/L 22/30

W/L 24/28

W/L 24/30

W/L 26/28

W/L 26/30

W/L 28/28

W/L 28/30

W/L 30/28

W/L 30/30

W/L 32/28

W/L 32/30

Senior trouser with slim leg shape and two front welt pockets. Back waist button tab detail.

From £16.50

QUANTITY/SIZE REQUIRED



CHESTERTON BOYS SLIM FIT TROUSERS

W/L 25/26

Regular

W/L 26/28

Regular

W/L 28/28

Short

W/L 28/30

Regular

W/L 28/32

Long

W/L 30/30

Short

W/L 30/32

Regular

W/L 30/34

Long

W/L 32/30

Short

W/L 32/32

Regular

W/L 32/34

Long

Flat front in fashionable slim cut. Jetted back pocket. Zipped security pocket. Internal waist adjuster. Single hook and bar with button extension. Waist sizes are in inches (W). Available in various lengths (L).

From £17.50

QUANTITY/SIZE REQUIRED



CHESTERTON BOYS FLAT FRONT TROUSERS

W/L 26/28

W/L 28/28

W/L 28/30

W/L 30/30

W/L 30/32

W/L 30/34

W/L 32/30

W/L 32/32

W/L 32/34

W/L 34/30

W/L 34/32

W/L 34/34

Inside waist adjuster. Two side pockets. Back pocket with button. Belt and belt loops. Security pocket with zip. Hook and bar fastening with button extension. Spare button. Maxtech stain resistant finish.

From £17.00

QUANTITY/SIZE REQUIRED



CHESTERTON BERMUDA BOYS GREY SHORTS

AGE 11/13

WAIST 29.5

WAIST 31

WAIST 32.5

WAIST 33

WAIST 34.5

SUMMER TERM ONLY. Pleated front with elasticated back and belt loops. Long leg style and fully lined. Sizes available are in waist sizes in inches. Age 11/13 waist size 28 inch.

From £14.99

QUANTITY/SIZE REQUIRED

CHESTERTON COMMUNITY COLLEGE | YEAR 7 PE KIT



CHESTERTON PE T-SHIRT (Compulsory)



Left chest embroidery. Saffire Blue. Moisture wicking fabric with quick drying properties. Set in sleeve design and crew neck.

From **£6.99**

QUANTITY/SIZE REQUIRED



CHESTERTON GIRL FIT PE T-SHIRT (Compulsory)



Left chest embroidery. Saffire Blue. Girl fit with curved back hem. Moisture wicking fabric with quick drying properties. Set in sleeve design and crew neck.

From **£7.49**

QUANTITY/SIZE REQUIRED



CHESTERTON REVERSIBLE RUGBY/HOCKEY SHIRT (Compulsory)



Fully reversible. Panelled outer and solid colour inner. Fashionable Collar. Rubber buttons. Maxtech wicking. **THIS GARMENT IS FOR BOYS ONLY.**

From **£17.00**

QUANTITY/SIZE REQUIRED



CHESTERTON GIRLS 1/4 ZIP FLEECE JACKET



Perfectly crafted raglan sleeves. Core micron fleece mid layer top. Super stretch fit. Breathable. Raglan sleeves. No pocket. Flatlock stitch. Covered taped neck seam. Jetted cuff feature. **THIS ITEM IS FOR GIRLS ONLY**

From **£14.50**

QUANTITY/SIZE REQUIRED



CHESTERTON BOYS SHADOW STRIPE SHORTS



Navy. Elasticated waist. Sizes (waist) are in inches.

From **£4.75**

QUANTITY/SIZE REQUIRED



CHESTERTON GIRLS PE SKORT



Side vents. Decorative back seam.

From **£9.99**

QUANTITY/SIZE REQUIRED



CHESTERTON UNISEX PE TRACKSUIT BOTTOMS



Part lined - mesh/polyester. Long zipped open hem boot access. Reflective piping for high visibility. Three pockets, 2 zipped.

From **£14.50**

QUANTITY/SIZE REQUIRED

CHESTERTON COMMUNITY COLLEGE | YEAR 7 PE KIT



CHESTERTON UNISEX PE SOCKS

SIZE 3-6 SIZE 7-11

Stretch nylon. Available in size large boys 3/6 and mens 7/11 (shoe size)

From **£5.20**

QUANTITY/SIZE REQUIRED



CHESTERTON GIRLS LEGGINGS

WAIST 22/24 WAIST 26/28 WAIST 30/32 WAIST 34/36 WAIST 38/40

Navy/silver. 88 per cent Nylon, 12 per cent Spandex. Wide comfortable elasticated waistband. Silver reflective tape trimming. Opaque fabric.

From **£14.50**

QUANTITY/SIZE REQUIRED

CHESTERTON COMMUNITY COLLEGE | ADDITIONAL ITEMS



SCHOOL WATER BOTTLE

500ml plastic drinks bottle.

£2.75

QUANTITY REQUIRED



MOUTHGUARDS

Clear Mouthguards. Custom fit. Available in junior and senior. *N.B Colour may vary

£2.99

QUANTITY/SIZE REQUIRED



NAME LABELS

By using our printed iron-on labels, your child's uniform and sports kit can be identified easily and efficiently. These labels can be ironed on anywhere inside your child's garment.

Maximum of 17 characters.

Packs of 25 at £3.50 or 50 at £5.00.

£3.99

QUANTITY/SIZE REQUIRED



CHESTERTON SHARPIE FINE MARKER

Clear Mouthguards. Custom fit. Available in junior and senior. *N.B Colour may vary

£2.50

QUANTITY/SIZE REQUIRED




SCHOOLS

ORDER ONLINE

ORDER THE **CHESTERTON COMMUNITY COLLEGE** UNIFORM ONLINE AT www.totalclothingshop.co.uk/chesterton

CHESTERTON CLOTHING SUPPLIED BY TOTALCLOTHINGSHOP.CO.UK VISA MasterCard DEBIT

 NEED HELP WITH AN ORDER? [CALL 01733 374705](tel:01733374705) **TOTAL CLOTHING SHOP .CO.UK**


[HOME](#) [PRODUCTS](#) [CONTACT US](#) [LOGIN](#) [BASKET](#)

Due to the latest government guidelines on the Coronavirus, we have now suspended production at our warehouse.

Orders can still be placed on line and will be despatched as soon as restrictions are lifted and we are able to.

Thank you for your support and please stay safe.

Welcome to the Chesterton Community College Uniform Shop
Simply click on the product category on the left hand side to start shopping



Orders for school delivery will be delivered weekly into school on a Thursday

[CLOTHING](#) | [CUSTOMER SERVICE](#) | [POLICY](#) | [PRIVACY POLICY](#) | [CONTACT US](#)

EARLY BIRD OFFER
FREE POSTAGE & PACKING
When you spend over **£50.00**
(From 1st until 30th June 2020).

HINTS & TIPS
ORDER WITH A FRIEND!
Have you thought about ordering with a friend to reach the free carriage value?



SCHOOLS

SHOWROOM LOCATION

HINTS & TIPS

Please check our website www.totalclothing.co.uk before travelling to our showroom.

Opening times may alter and we may be taking appointments only to ensure social distancing. We will update the website.

If you do have any queries, please contact our Customers Services Team who would be happy to help



No 9 Botolph Trading Estate,
Oundle Road, Peterborough PE2 9QP
(Turn onto Botolph Bridge next to Hilton Van Hire)

01733 394758

customerservices@totalclothing.co.uk



SCHOOLS

Visit www.totalclothingshop.co.uk/chesterton or visit our showroom.

WE DO LOTS MORE THAN SCHOOL UNIFORM...



Trip or leavers hoodies - Sell your trip hoodies online - no hassle!



Creating professional, affordable personalised clothing. In house printing and embroidery.



We can supply all of your printed and embroidered clothing either in bulk or via your own online club shop.



Create online personalised clothing campaigns to raise funds.

CREATING PROFESSIONAL, AFFORDABLE PERSONALISED CLOTHING

TOTAL
C L O T H I N G

No 9 Botolph Trading Estate, Oundle Road, Peterborough PE2 9QP
Call 01733 394758 sales@totalclothing.co.uk

www.totalclothing.co.uk